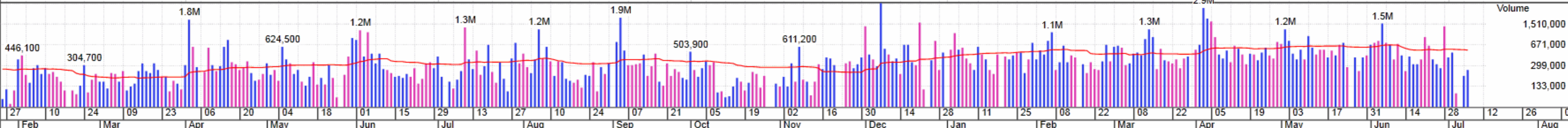
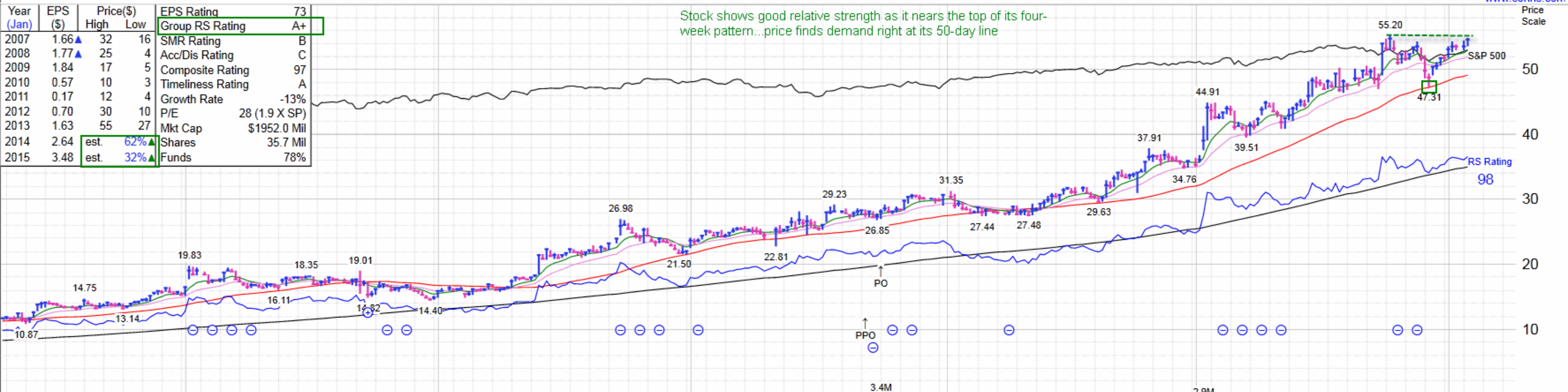


Year (Jan)	EPS (\$)	Price(\$) High Low	EPS Rating	73
2007	1.66▲	32 16	Group RS Rating	A+
2008	1.77▲	25 4	SMR Rating	B
2009	1.84	17 5	Acc/Dis Rating	C
2010	0.57	10 3	Composite Rating	97
2011	0.17	12 4	Timeliness Rating	A
2012	0.70	30 10	Growth Rate	-13%
2013	1.63	55 27	P/E	28 (1.9 X SP)
2014	2.64	est. 62%▲	Mkt Cap	\$1952.0 Mil
2015	3.48	est. 32%▲	Shares	35.7 Mil
			Funds	78%

Stock shows good relative strength as it nears the top of its four-week pattern...price finds demand right at its 50-day line



Quarter Ended July 31, 2012				Quarter Ended October 31, 2012				Quarter Ended January 31, 2013				Quarter Ended April 30, 2013				EPS Due 9/5e
0.36	vs	0.18	+100%	0.38	vs	0.02	+999%	0.54	vs	0.34	+59%	0.61	vs	0.35	+74%	Earnings (\$)
207.4	vs	187.0	+11%	206.4	vs	186.6	+11%	250.3	vs	226.7	+10%	251.1	vs	200.9	+25%	Sales (\$Mil)
N/A			13 -- 17	N/A			12 -- 18	N/A			15 -- 19	N/A			14 -- 23	Div--P/E Range