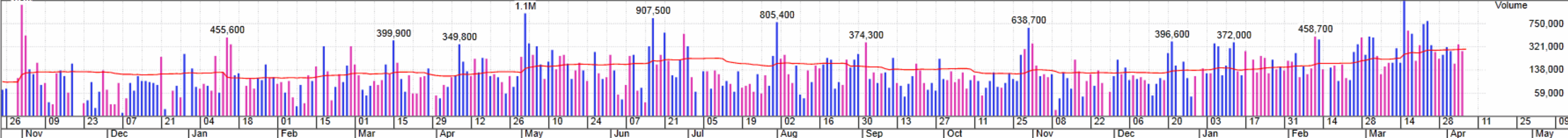
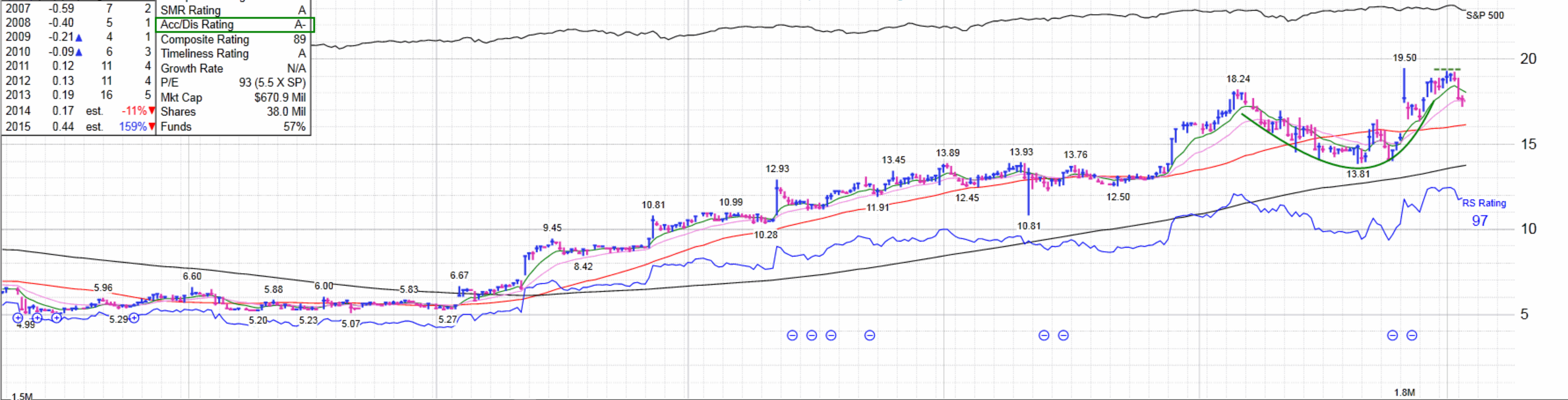


Year (Dec)	EPS (\$)	Price(\$) High Low	EPS Rating	42
2007	-0.59	7 2	Group RS Rating	B
2008	-0.40	5 1	SMR Rating	A
2009	-0.21▲	4 1	Acc/Dis Rating	A-
2010	-0.09▲	6 3	Composite Rating	89
2011	0.12	11 4	Timeliness Rating	A
2012	0.13	11 4	Growth Rate	N/A
2013	0.19	16 5	P/E	93 (5.5 X SP)
2014	0.17 est.	-11%▼	Mkt Cap	\$670.9 Mil
2015	0.44 est.	159%▼	Shares	38.0 Mil
			Funds	57%

Stock holds up well vs. other growth stocks.



Quarter Ended March 31, 2013				Quarter Ended June 30, 2013				Quarter Ended September 30, 2013				Quarter Ended December 31, 2013				EPS Due 4/28*
0.08	vs	0.04	+100%	0.05	vs	0.03	+67%	0.04	vs	0.05	-20%	0.02	vs	0.01	+100%	Earnings (\$)
18.0	vs	15.5	+16%	18.2	vs	15.9	+14%	17.1	vs	15.9	+8%	18.9	vs	16.5	+15%	Sales (\$Mil)
N/A			29 -- 38	N/A			27 -- 56	N/A			56 -- 75	N/A			56 -- 86	Div-P/E Range